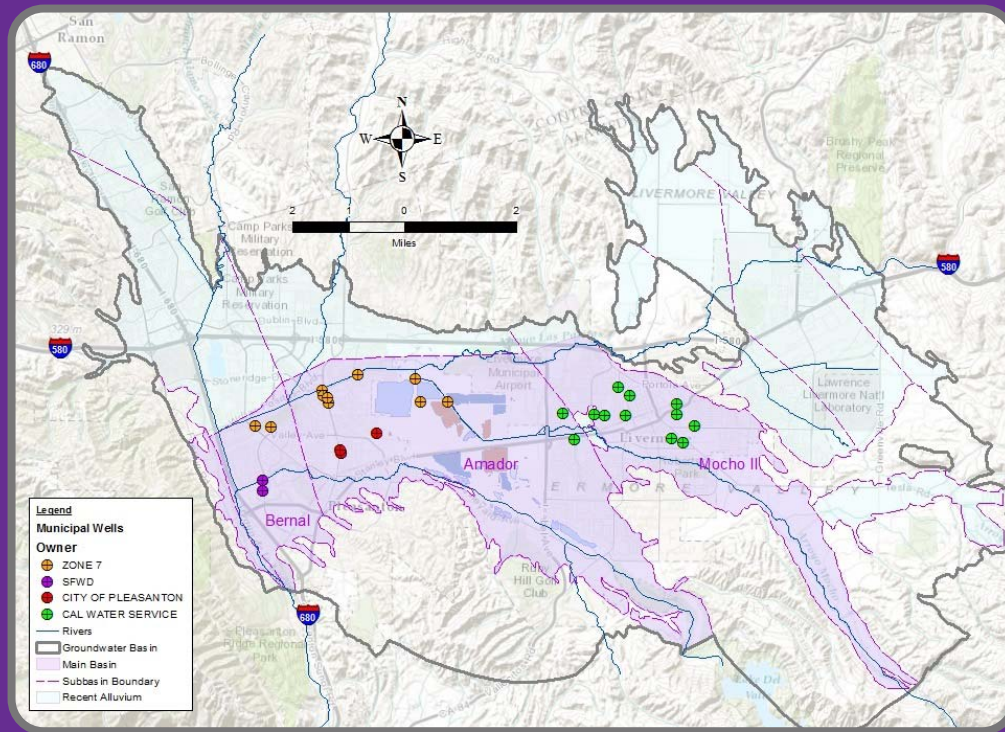


ANNUAL REPORT FOR THE GROUNDWATER MANAGEMENT PROGRAM 2015 WATER YEAR

LIVERMORE VALLEY GROUNDWATER BASIN



JUNE 2016



Zone 7 Water Agency

**Annual Report for the
Groundwater Management Program
2015 Water Year (October 2014 – September 2015)
Livermore Valley Groundwater Basin**

ZONE 7 WATER AGENCY

100 North Canyons Parkway

Livermore, CA 94551

(925) 454-5000

PREPARED BY:

ZONE 7 WATER AGENCY STAFF

Authors:

Mike Garguilo – *Water Resources Technician*
Ryan Gromer – *Water Resources Technician*
Matt Katen, P.G., C.H.G. – *Principal Geologist*
Tom Rooze, P.G., C.E.G. – *Associate Geologist*
Colleen Winey, P.G. – *Assistant Geologist*

Contributors:

Jill Duerig, P.E. – *General Manager*
Wyman Hong – *Water Resources Technician*
Carol Mahoney, P.G, C.H.G. – *Integrated Water Resources Manager*
Sal Segura, P.E. – *Associate Engineer*

Table of Contents

<u>Executive Summary</u>	<u>Page</u>
Introduction	1
Climatological	2
Surface Water	3
Chain of Lakes	3
Groundwater Elevations	4
Groundwater Quality	5
Land Surface Elevation	7
Wastewater and Recycled Water	7
Land Use	8
Groundwater Storage Management for Sustainability	8
Water Supply and Management	9
Water Quality Sustainability	10

Executive Summary Figures

<i>Figure ES-1: Livermore Valley Groundwater Basin</i>	<i>1</i>
<i>Figure ES-2: Sta. 15E Rainfall (inches), 1974-2015 Water Years</i>	<i>2</i>
<i>Figure ES-3: Stream Recharge Volumes (AF), 1974 to 2015 Water Years</i>	<i>3</i>
<i>Figure ES-4: Key Well Water Levels in Amador West Subbasin (1973 to 2015)</i>	<i>4</i>
<i>Figure ES-5: Water Levels above Historical Lows (Fall 2015 Water Year)</i>	<i>5</i>
<i>Figure ES-6: Average Nitrate Concentration by Subbasin (2015 Water Year)</i>	<i>6</i>
<i>Figure ES-7: Surface Elevation and Groundwater Levels at Mocho Wellfield</i>	<i>7</i>
<i>Figure ES-8: Groundwater Storage (1974 to 2015 Water Years)</i>	<i>8</i>
<i>Figure ES-9: Main Basin Sustainability</i>	<i>10</i>
<i>Figure ES-10: Main Basin Salt Loading and Theoretical TDS Concentration (1974 to 2015 Water Years)</i>	<i>11</i>

Sections

1	Background.....	1-1
1.1	<i>Introduction.....</i>	<i>1-1</i>
1.2	<i>Groundwater Management Plan Elements</i>	<i>1-2</i>
1.3	<i>Groundwater Management Objectives.....</i>	<i>1-5</i>
1.4	<i>Description of Plan Area: Basin/Hydrogeologic Setting</i>	<i>1-6</i>
1.4.1	Geology	1-6
1.4.2	Main Basin and Subbasins	1-6
1.4.3	Aquifer Zones.....	1-7
1.4.4	Groundwater Characteristics	1-8

2	Precipitation and Evaporation.....	2-1
2.1	<i>Program Description.....</i>	<i>2-1</i>
2.2	<i>Results for the 2015 WY.....</i>	<i>2-1</i>
3	Surface Water Contributions and Losses	3-1
3.1	<i>Program Description.....</i>	<i>3-1</i>
3.2	<i>Results for the 2015 WY.....</i>	<i>3-1</i>
3.2.1	Arroyo Valle.....	3-2
3.2.2	Arroyo Mocho	3-4
3.2.3	Arroyo Las Positas	3-6
3.2.4	Arroyo De La Laguna.....	3-6
3.2.5	Other Streams	3-7
4	Chain of Lakes and Quarry Operations Impacts.....	4-1
4.1	<i>Program Description.....</i>	<i>4-1</i>
4.2	<i>Results for the 2015 WY.....</i>	<i>4-2</i>
4.3	<i>Chain of Lakes Recharge Projects.....</i>	<i>4-3</i>
5	Groundwater Elevations.....	5-1
5.1	<i>Program Description.....</i>	<i>5-1</i>
5.1.1	Operational Objectives to Achieve Sustainability.....	5-1
5.1.2	Groundwater Elevation Program Changes for 2015	5-7
5.2	<i>Results for the 2015 WY.....</i>	<i>5-7</i>
5.2.1	Upper Aquifer Zone	5-8
5.2.2	Lower Aquifer Zone.....	5-9
6	Groundwater Quality/Inorganics	6-1
6.1	<i>Program Description.....</i>	<i>6-1</i>
6.1.1	Objectives.....	6-3
6.1.2	Program Changes for 2015.....	6-4
6.2	<i>Results for the 2015 WY.....</i>	<i>6-5</i>
6.2.1	Upper Aquifer Zone	6-5
6.2.2	Lower Aquifer Zone.....	6-10
7	Land Surface Elevation	7-1
7.1	<i>Program Description.....</i>	<i>7-1</i>
7.2	<i>Results for the 2015 WY.....</i>	<i>7-2</i>
8	Wastewater and Recycled Water.....	8-1
8.1	<i>Program Description.....</i>	<i>8-1</i>
8.2	<i>Results for the 2015 WY.....</i>	<i>8-2</i>
8.2.1	Municipal Wastewater and Recycled Water	8-2
8.2.2	Recycled Water Quality	8-3

8.2.3	Future Recycled Water Use.....	8-4
8.2.4	Other Applied Wastewater	8-5
9	Land Use.....	9-1
9.1	<i>Program Description.....</i>	9-1
9.2	<i>Results for the 2015 WY.....</i>	9-2
10	Water Budget.....	10-1
10.1	<i>Water Budget Calculation.....</i>	10-1
10.2	<i>Hydrologic Inventory Method.....</i>	10-1
10.2.1	Description	10-1
10.2.2	Results for 2015 WY	10-2
10.2.3	Supply Components	10-3
10.2.4	Demand Components	10-6
10.3	<i>Groundwater Elevation Method.....</i>	10-9
10.3.1	Description	10-9
10.3.2	Results for 2015 WY.....	10-10
10.4	<i>Total Storage.....</i>	10-10
11	Groundwater Supply Sustainability.....	11-1
11.1	<i>Introduction.....</i>	11-1
11.2	<i>Historical Water Levels.....</i>	11-1
11.3	<i>Sustainable Groundwater Management.....</i>	11-2
11.4	<i>Groundwater Budget Components.....</i>	11-4
11.4.1	Introduction	11-4
11.4.2	Natural Sustainable Yield.....	11-5
11.4.3	Zone 7 Supply and Demand	11-8
11.5	<i>Groundwater Model.....</i>	11-14
11.5.1	Model Description.....	11-14
11.5.2	Groundwater Model Update and Improvements.....	11-14
11.6	<i>Future SGMA Compliance.....</i>	11-15
12	Water Quality Sustainability.....	12-1
12.1	<i>Salt and Nutrient Management</i>	12-1
12.1.1	Salt and Nutrient Management Plans	12-1
12.1.2	Salt and Nutrient Management Strategy	12-2
12.1.3	Average Salt and Mineral Concentrations.....	12-3
12.1.4	Theoretical Salt Loading Calculations	12-5
12.1.5	Groundwater Demineralization	12-8
12.1.6	Average Nitrate Concentration.....	12-8
12.1.7	Nutrient Loading	12-10

12.2	<i>Groundwater Model</i>	12-12
12.3	<i>Nutrient Management: OWTS</i>	12-13
12.3.1	Results 2015 WY	12-13
12.4	<i>Well Ordinance Program</i>	12-14
12.5	<i>Toxic Site Surveillance Program</i>	12-15
12.5.1	Program Description	12-15
12.5.2	Summary for the 2015 WY	12-17
13	References	13-1

List of Figures

<u>In Text</u>	<u>Page</u>
<i>Figure 1-A: Map of Livermore Valley Groundwater Basin</i>	1-1
<i>Figure 1-B: Groundwater Management Planning Act Requirements</i>	1-2
<i>Figure 1-C: Map of Groundwater Basins within Zone 7 Service Area</i>	1-4
<i>Figure 4-A: Mining Pond Operators and Owners</i>	4-1
<i>Figure 4-B: Map of Future Chain of Lakes</i>	4-4
<i>Figure 5-A: Map of Key Wells for the 2015 Water Year</i>	5-3
<i>Figure 5-B: Table of Key Wells for the 2015 Water Year</i>	5-4
<i>Figure 5-C: Table of CASGEM Wells for the 2015 Water Year</i>	5-5
<i>Figure 5-D: Map of CASGEM Wells in Main Basin</i>	5-5
<i>Figure 5-E: Table of CASGEM Wells in Alameda Co. Portion of Tracy Subbasin</i>	5-6
<i>Figure 5-F: Map of CASGEM Wells in Alameda Co. Portion of Tracy Subbasin</i>	5-6
<i>Figure 5-G: Change in Groundwater Elevation in Key Wells from Fall 2014 to Fall 201</i>	5-8
<i>Figure 6-A: Table of DSRSD Wells Included in the 2015 Water Year Program</i>	6-4
<i>Figure 8-A: Recycled Water Volumes (AF) for the 2015 Water Year</i>	8-2
<i>Figure 8-B: Wastewater Quality (mg/L, except where noted) for the 2015 Water Year</i>	8-4
<i>Figure 8-C: Wastewater Volumes (AF) for the 2015 Water Year</i>	8-5
<i>Figure 8-D: Wastewater Quality (mg/L, except where noted) for the 2015 Water Year</i>	8-5
<i>Figure 10-A: Groundwater Supply and Demand Components</i>	10-2
<i>Figure 10-B: Stream Recharge Components</i>	10-4
<i>Figure 10-C: Areal Recharge Components</i>	10-5
<i>Figure 10-D: Subsurface Groundwater Flow</i>	10-5
<i>Figure 10-E: Zone 7 Groundwater Pumping</i>	10-7
<i>Figure 10-F: Map of Municipal Wells</i>	10-8
<i>Figure 10-G: Groundwater Pumping By Others</i>	10-8
<i>Figure 10-H: Mining Area Demand Components</i>	10-9
<i>Figure 10-I: Groundwater Storage Summary (in Thousand AF)</i>	10-11
<i>Figure 11-A: Groundwater Basin Management: Historical Groundwater Elevations at Fairgrounds Key Well</i>	11-2
<i>Figure 11-B: Groundwater Inflows and Outflows since 1974</i>	11-4
<i>Figure 11-C: Natural Groundwater Inflow Components</i>	11-5
<i>Figure 11-D: Natural Sustainable Yield Demand Components</i>	11-6
<i>Figure 11-E: Long-Term Natural Sustainable Yield</i>	11-7
<i>Figure 11-F: Long-Term Zone 7 Recharge/Pumping</i>	11-8
<i>Figure 11-G: Supplemental Sources for the 2015 Calendar Year</i>	11-10
<i>Figure 11-H: Effect of Zone 7's Artificial Recharge</i>	11-13

<i>Figure 12-A: Historical Average TDS Concentrations by Sub-Basin</i>	12-4
<i>Figure 12-B: Current Average TDS Concentrations by Node and Basin</i>	12-5
<i>Figure 12-C: Main Basin Salt Loading Calculation Components</i>	12-6
<i>Figure 12-D: Main Basin Salt Loading and Theoretical TDS Concentration (1974 to 2015 Water Years)</i>	12-7
<i>Figure 12-E: Salts Removed by Zone 7's MGD Operations</i>	12-8
<i>Figure 12-F: Historical Average NO₃N Concentrations by Sub-Basin</i>	12-9
<i>Figure 12-G: Average Nitrate Concentrations by Node and Basin</i>	12-10
<i>Figure 12-H: Sources and Losses of Nitrogen in Groundwater</i>	12-11
<i>Figure 12-I: Main Basin Net Nitrogen Loading estimated for 2015 WY</i>	12-12
<i>Figure 12-J: Low-Threat UST Case Closure Policy Criteria</i>	12-17
<i>Figure 12-K: TSS Cases with Status Changes in the 2015 WY</i>	12-18

Attached

Figure 1-1: Recharge Layer and Confining Layer Map

Figure 2-1: Climatological Monitoring Stations with Average Rainfall

Figure 2-2: Table of Climatological Stations, 2015 Water Year

Figure 2-3: Graph of Livermore Rainfall

Figure 2-4: Monthly Precipitation Data, 2015 Water Year

Figure 2-5: Historical Monthly Precipitation, Monitoring Station 15E, 1987 to 2015 Water Years

Figure 2-6: Monthly Evapotranspiration Data, 2015 Water Year

Figure 2-7: Historical Monthly Pan Evaporation, Monitoring Station Lake del Valle, 1969 to 2015 Water Years

Figure 3-1: Map of Surface Water Sites, 2015 Water Year

Figure 3-2: Table of Surface Water Monitoring Stations and Monitoring Frequencies, 2015 Water Year

Figure 3-3: Stream Gage Details, Recorder Type Stations, 2015 Water Year

Figure 3-4: Monthly Streamflows, Recorder Stations, 2015 Water Year

Figure 3-5: Table of Surface Water Quality Results, 2015 Water Year

Figure 4-1: Map of Gravel Mining Pits

Figure 4-2: SemiAnnual Water Levels in Mining Area Ponds, 2015 Water Year

Figure 4-3: Water Quality Results for Mining Area Water Samples, 2015 Water Year

Figure 5-1: Map of Wells in 2014 Groundwater Elevation Program

Figure 5-2: Groundwater Elevation Program Wells and Respective Monitoring Frequency

Figure 5-3: Well Construction Details

Figure 5-4: Map of Historical Lows in Lower Aquifer (Update Oct 2015)

Figure 5-5: Table of Semiannual Groundwater Levels, Fall 2014 To Fall 2015

Figure 5-6: Historical Key Well Hydrographs, 1901 to 2015 Water Years

Figure 5-7: Two-Year Key Well Hydrographs, 2013 Through 2015 Water Years

Figure 5-8: Groundwater Gradient Map, Upper Aquifer, Spring 2015

Figure 5-9: Groundwater Gradient Map, Upper Aquifer, Fall 2015

Figure 5-10: Groundwater Gradient Map, Lower Aquifer, Spring 2015

Figure 5-11: Groundwater Gradient Map, Lower Aquifer, Fall 2015

Figure 5-12: Map of Groundwater Levels Above Historical Lows, Lower Aquifer, Fall 2015

Figure 6-1: Map of Wells in 2015 Groundwater Quality Program

Figure 6-2: Groundwater Quality Program Wells with Sampling Frequency

Figure 6-3: Table of Water Quality Results, 2015 Water Year

Figure 6-4: Map of TDS Concentrations; Upper Aquifer; 2015 Water Year

Figure 6-5: Map of Nitrate Concentrations; Upper Aquifer; 2015 Water Year

Figure 6-6: Map of Boron Concentrations; Upper Aquifer; 2015 Water Year

Figure 6-7: Map of Total Chromium Concentrations; Upper Aquifer; 2015 Water Year

Figure 6-8: Map of TDS Concentrations; Lower Aquifer; 2015 Water Year

Figure 6-9: Map of Nitrate Concentrations; Lower Aquifer; 2015 Water Year

Figure 6-10: Map of Boron Concentrations; Lower Aquifer; 2015 Water Year

Figure 6-11: Map of Total Chromium Concentrations; Lower Aquifer; 2015 Water Year

Figure 6-12: Graphs of TDS Concentrations in Key Wells, 1974 to 2015 Water Years

Figure 6-13: Hydro-Chemo Graph for 3S/1E 18A 6 (Hopyard 6), Bernal Subbasin, Lower Aquifer

Figure 6-14: Hydro-Chemo Graph for 3S/1E 9M 3 (Mocho 2), Amador West Subbasin, Lower Aquifer

Figure 6-15: Hydro-Chemo Graph for 3S/2E 7P 3), Amador East Subbasin, Lower Aquifer

Figure 6-16: Hydro-Chemo Graph for 3S/2E 8P 1, Mocho II Subbasin, Lower Aquifer

Figure 7-1: Benchmark Locations, 2015 Land Surface Elevation Monitoring Program

Figure 7-2: Survey Points and Descriptions, 2015 Water Year

Figure 7-3: Kier & Wright Survey Measurements, 2015 Water Year

Figure 7-4: Ground Surface Elevation Change, Fall 2014 to Fall 2015

Figure 7-5: Net Land Surface Elevation Changes; Hopyard Wellfield

Figure 7-6: Net Land Surface Elevation Changes; Mocho Wellfield

Figure 7-7: Net Land Surface Elevation Changes; Stoneridge Well

Figure 7-8: Net Land Surface Elevation Changes; Chain of Lakes Wellfield

Figure 7-9: Net Land Surface Elevation Changes; Busch Valley Well

Figure 7-10: Net Land Surface Elevation Changes; Las Positas Boulevard

Figure 7-11: Net Land Surface Elevation Changes; Santa Rita Road

Figure 8-1: Existing and Planned Future Wastewater and Recycled Water

Figure 9-1: Livermore Valley Land Use, 2015 Water Year

Figure 10-1: Mean Groundwater Elevations by Node, Upper and Lower Aquifers, Fall 2015

Figure 10-2: Nodal Constants for Storage Calculations

Figure 10-3: Groundwater Elevation and Storage, Nodal Groundwater Elevation Method, 1963 to 1991 Water Years

Figure 10-4: Groundwater Elevation and Storage, Nodal Groundwater Elevation Method, 1992 to 2015 Water Years

Figure 10-5: Groundwater Storage, Hydrologic Inventory Method, 2015 Water Year

Figure 10-6: Groundwater Supply and Demand, 2015 Water Year

Figure 10-7: Historical Groundwater Storage, Hydrologic Inventory Method, 1974 to 2015 Water Years

Figure 10-8: Graphs of Historical Groundwater Storage, Hydrologic Inventory Method, 1974 to 2015 Water Years

Figure 10-9: Groundwater Production from Municipal and Other Supply Wells, 2015 Water Year

Figure 10-10: Main Basin Groundwater Production, 1974 to 2015 Water Years

Figure 11-1: Valley Water Production from Imported Water and Groundwater, 1974 to 2015 Water Years

Figure 12-1: Main Basin Salt Loading Calculations, 2015 Water Year

Figure 12-2: Historical Salt Loading, 1974 to 2015 Water Years

Figure 12-3: Graphs of Salt Loading and Concentrations, 1974 to 2015 Water Years

Figure 12-4: Well Permitting Requirement Areas

Figure 12-5: Toxic Site Surveillance; Case Priority System

Figure 12-6: Toxic Site Surveillance; Livermore Area Sites

Figure 12-7: Toxic Site Surveillance; Pleasanton and Sunol Area Sites

Figure 12-8: Toxic Site Surveillance; Dublin Area Sites

Figure 12-9: Toxic Site Surveillance; Active Sites Summary

Appendix 12-1: Nutrient Management Plan Documentation

Acronyms and Abbreviations

Abbrev	Description	Abbrev	Description
µg/L	Micro grams per liter	DWR	California Department of Water Resources
ACCDA	Alameda County Community Development Agency	EBDA	East Bay Discharging Authority
ACEH	Alameda County Environmental Health	EBRPD	East Bay Regional Parks District
ACNP	Alamo Canal near Pleasanton	EIR	Environmental Impact Report
ACWD	Alameda County Water District	ESL	Environmental screening level
ADLLV	Arroyo De La Laguna at Verona	ETo	Evapotranspiration
ADVP	Arroyo Del Valle Pleasanton	ft	Feet
AF	Acre-feet	GIS	Geographic information systems
AF/yr	Acre-feet per year	GPD	Gallons per day
ALP	Arroyo Las Positas	GPQ	Groundwater Pumping Quota
ALP_ELCH	Arroyo Las Positas at El Charro	GSP	Groundwater Sustainability Plan
ALPL	Arroyo Las Positas near Livermore	GWMP	Groundwater Management Plan
AMHAG	Arroyo Mocho Hageman	GWE	Groundwater Elevation
AM_KB	Arroyo Mocho at Kaiser Bridge	HI	Hydrologic Inventory
AMNL	Arroyo Mocho near Livermore	HRL	Health reference level
AMP	Arroyo Mocho Pleasanton	ISCO	In-situ chemical oxidation
AOC	Area of Concern	LAVWMA	Livermore-Amador Valley Water Management Agency
AVADLL	Arroyo Valle at Arroyo de la Laguna	LDV	Lake Del Valle
AVBLC	Arroyo Valle below Lang Canyon	LLNL	Lawrence Livermore National Laboratory
AVNL	Arroyo Valle near Livemore	LTCP	Low-Threat Underground Storage Tank Closure Policy
BBID	Byron-Bethany Irrigation District	LWRP	Livermore Water Reclamation Plant
bgs	Below ground surface	MCL	Maximum contaminant level
BMOs	Basin management objectives	mg/L	Milligrams per liter
BMPs	Best management practices	MGDP	Mocho Groundwater Demineralization Plant
BO	Basin objective	MOU	Memorandum of Understanding
BTEX	Benzene, toluene, ethylbenzene, xylene	msl	Mean sea level
CASGEM	California Statewide Groundwater Elevation Monitoring	MTBE	Methyl tertiary-butyl ether
CCNP	Chabot Canal near Pleasanton	NAVD	North American Vertical Datum
CEC	Constituents-of-emerging-concern	NMP	Nutrient Management Plan
CEQA	California Environmental Quality Act	NPDES	National Pollutant Discharge Elimination System
cfs	Cubic feet per second	OWTS	Onsite wastewater treatment system
CIMIS	California Irrigation Management Information System	PCE	Tetrachlorethylene
COL	Chain of Lakes	POTW	Publically owned treatment works
Cr	Chromium	ppb	Parts per billion
CrIII	Trivalent chromium	PRP	Potential responsible party
CrIV	Hexavalent chromium	RAP	Remedial Action Plan
CVOC	Chlorinated volatile organic compound	RO	Reverse osmosis
CWS	California Water Service	RP	Responsible Party
CY	Calendar year	RRE	Rural residential equivalent
DCE	Dichloroethene	RWQCB	California Regional Water Quality Control Board
DOE	Department of Energy	SBA	South Bay Aqueduct
DSRSD	Dublin San Ramon Services District	SFEI	San Francisco Estuary Institute

SGMA	Sustainable Groundwater Management Act	TPHd	Total petroleum hydrocarbons as diesel
SLIC	Spills, Leaks, Investigations, and Clean-ups	TPHg	Total petroleum hydrocarbons as gasoline
SFPUC	San Francisco Public Utilities Commission	TSS	Toxic Sites Surveillance
SMP	Salt Management Plan	USEPA	U.S. Environmental Protection Agency
SNL	Sandia National Laboratories	USGS	U.S. Geological Survey
SNMP	Salt Nutrient Management Plan	UST	Underground storage tank
SWP	State Water Project	VA	Veteran's Administration
SWRCB	State Water Resources Control Board	VC	Vinyl chloride
TAF	Thousand acre-feet	VOC	Volatile organic compound
TBA	Tertiary-butyl alcohol	WMP	Well Master Plan
TCE	Trichloroethylene	WQO	Water Quality Objective
TDS	Total dissolved solids	WWMP	Wastewater Management Plan
TKN	Total Kjeldahl nitrogen	WY	Water year (October 1 through September 30)

LIVERMORE VALLEY GROUNDWATER BASIN WEST-EAST CROSS-SECTION

